

2018



403, 4th Floor, Al-Rehman Center, Shahra-e-Faisal, Karachi  
tel: +92 21 431 6242, +92 21 431 6575  
fax: +92 21 455 4986  
email: [info@catalyst.pk](mailto:info@catalyst.pk)  
<http://www.catalyst.pk>



# TRADE CAST

Version 1.0.2

**TradeCast User Guide**

---

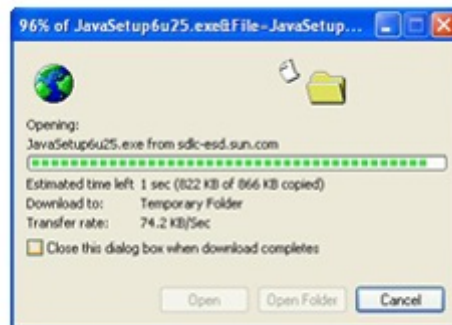
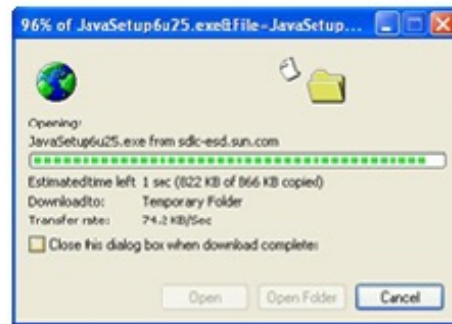
Revision sheet

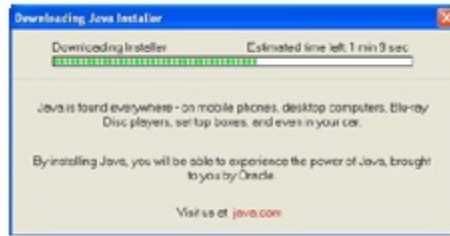
## Revision History

<b>Version</b>	<b>Date</b>	<b>Revision Description</b>
<b>V 1.0.1</b>	<b>21- JAN – 2013</b>	
<b>V 1.0.2</b>	<b>6 – FEB – 2014</b>	<b>Update</b>

## Java Installation

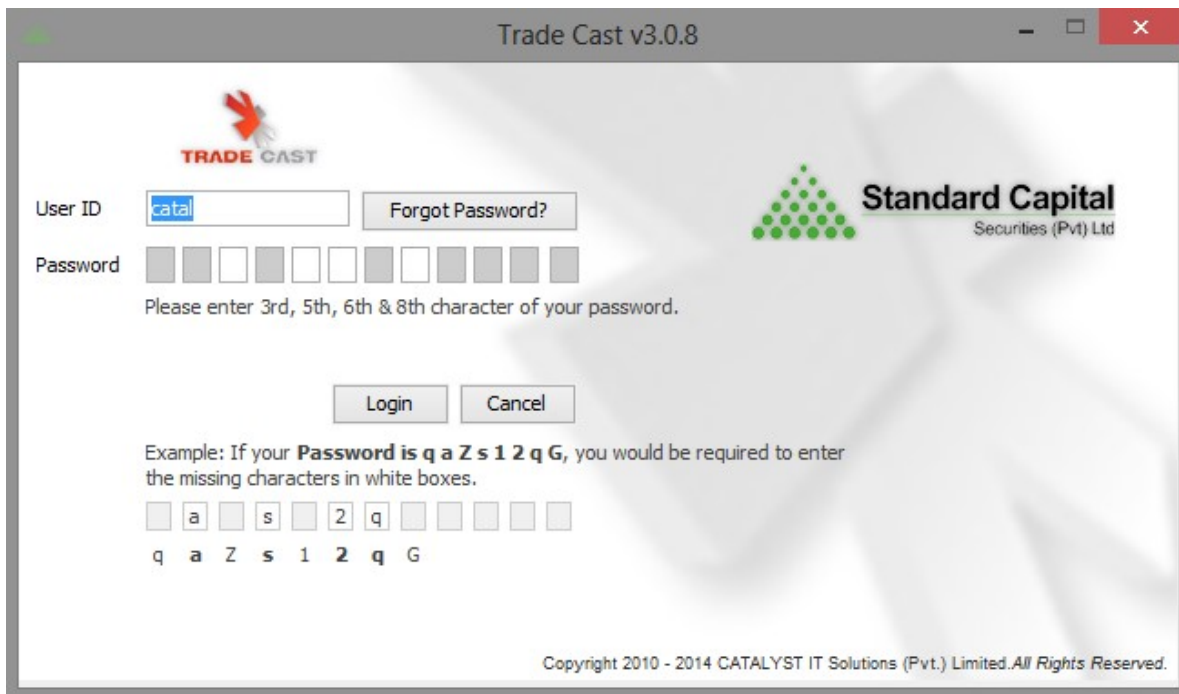
If Java is not installed in your computer, follow the procedure mentioned below



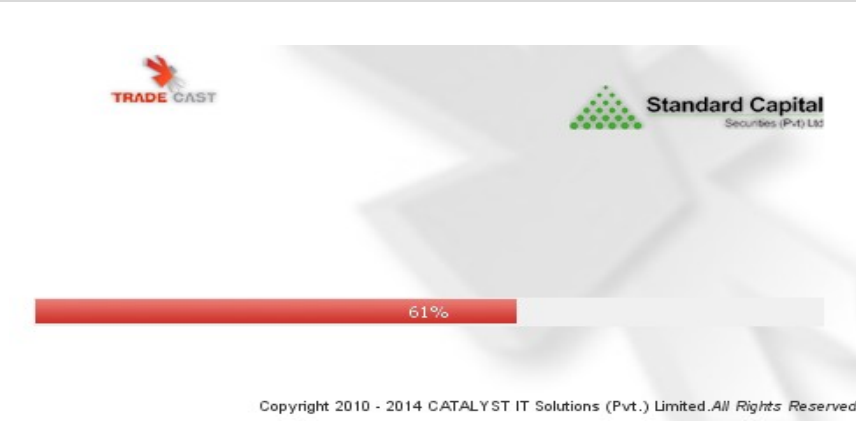


## Login Screen

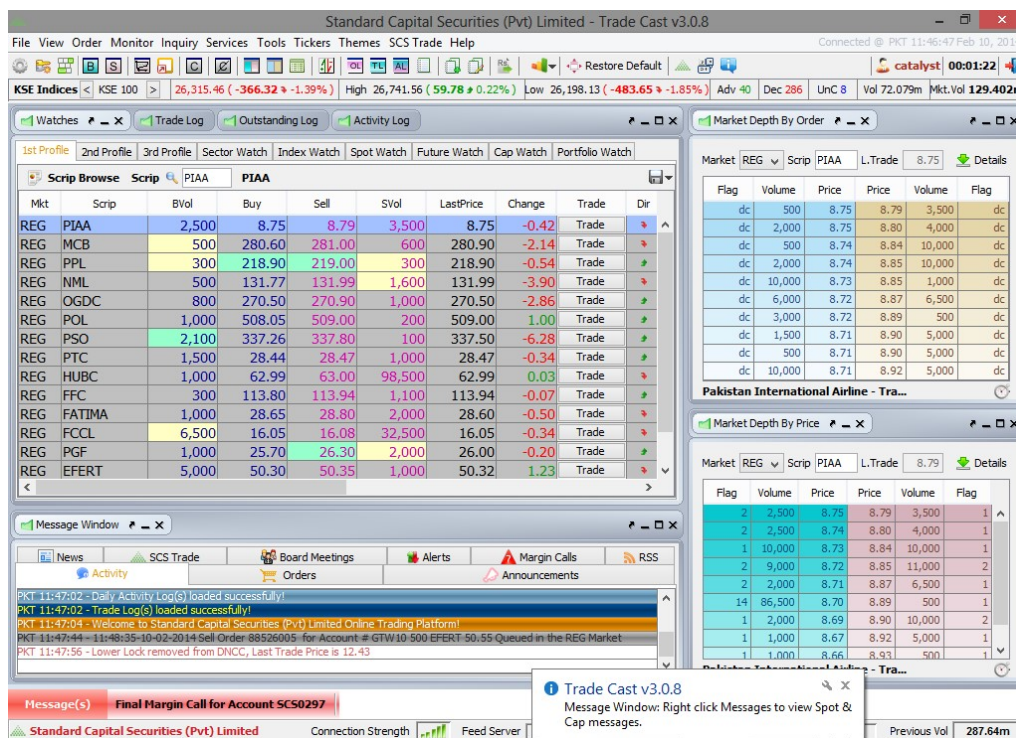
After downloading the application, following window will appear.



Enter Username and auto generated Password communicated on the provided email. Following window will appear,



Auto-generated only works on the first login. After login, password must be changed. Following window will appear after setting the password,



### Buy Window ( F4 )



## Sell Window ( F5 )

**Sell (Pakistan International Airline)** ✕

Market	Order Type	Volume	Scrp	Price	Account	PIN
REG	Limit	100	PIAA	0		
Disc Volume	0	Limit Price	0	<input type="checkbox"/> Save PIN	Send Order	
Buy Vol	Buy	Sell	Sell Vol	Change	Last Trade	Lower Lock
15,000	8.76	8.80	1,000	-0.37	8.80	8.17
			Upper Cap			10.17

i Please enter Volume. Forgot PIN? Settings

## Short Sell Window ( F8 )

**Short Sell (Pakistan International Airline)** ✕

Market	Order Type	Volume	Scrp	Price	Account	PIN
REG	Limit	100	PIAA	0		
Disc Volume	0	Limit Price	0	<input type="checkbox"/> Save PIN	Send Order	
Buy Vol	Buy	Sell	Sell Vol	Change	Last Trade	Lower Lock
500	8.77	8.80	10,000	-0.37	8.80	8.17
			Upper Cap			10.17

i Please enter Volume. Forgot PIN? Settings

## MBO ( Ctrl + F2 ) & MBP ( Ctrl + F3 )

Market Depth By Order ✕

Market REG Scrip FCCL L.Trade 15.59 Details

Flag	Volume	Price	Price	Volume	Flag
dc	3,500	15.57	15.59	500	dc
dc	15,000	15.55	15.59	500	dc
dc	2,000	15.53	15.59	1,000	dc
dc	15,000	15.52	15.60	4,000	dc
dc	25,000	15.51	15.60	500	dc
dc	4,000	15.51	15.60	90,000	dc
dc	5,000	15.51	15.60	500	dc
dc	2,500	15.51	15.60	1,000	dc
		<b>127,000</b>	<b>15.51</b>	<b>15.60</b>	<b>99,500</b>
		Tot. Vol.	Avg. Prc.	Avg. Prc.	Tot. Vol.

Fauji Cement Co Ltd. - Constructio...

Market Depth By Price ✕

Market REG Scrip FCCL L.Trade 15.59 Details

Flag	Volume	Price	Price	Volume	Flag
1	3,500	15.57	15.59	2,000	3
1	15,000	15.55	15.60	121,500	11
1	2,000	15.53	15.61	2,000	3
1	15,000	15.52	15.62	500	1
4	36,500	15.51	15.63	6,000	3
9	133,500	15.50	15.64	500	1
1	5,000	15.49	15.65	177,000	13
1	1,000	15.47	15.66	1,500	2
		<b>256,000</b>	<b>15.50</b>	<b>15.63</b>	<b>336,500</b>
		Tot. Vol.	Avg. Prc.	Avg. Prc.	Tot. Vol.

Fauji Cement Co Ltd. - Constructio...

## Top 30 Movers ( Ctrl + T )

Top 30 Movers						
By Volume	By Price Increase	By % Increase	By Price Decrease	By % Decrease		
Scrip	Company	Last	Change	%Change	Volume	Trades
JSCCL	Jahangir Siddiqui & Company Ltd. - Fi...	12.42	-0.67	-5.12	11,653,500	2,461
FCCL	Fauji Cement Co Ltd. - Construction a...	16.05	-0.34	-2.07	9,267,500	1,151
EFERT	Engro Fertilizers Limited. - Sector	50.20	1.11	2.26	6,768,000	2,882
KEL	K-Electric Limited. - Sector	6.32	-0.17	-2.62	5,748,500	351
DGKC	D. G. Khan Cement Co. Ltd. - Construo...	92.10	-3.97	-4.13	5,520,000	1,284
SBLR1	Samba Bank Limited.(R) - Sector	1.01	1.00	10,000.0	5,458,000	475
BAFL	Bank Alfalah Ltd. - Banks Sector	27.20	-0.49	-1.77	4,779,500	404
BOPR1	Bank Of Punjab.(R) - Sector	2.55	-0.08	-3.04	4,617,000	701
PAEL	Pakistan Elektron Ltd. - Household Go...	21.15	-0.25	-1.17	4,256,000	1,460
ANL	Azgard Nine Limited - Personal Goods ...	8.46	-0.31	-3.53	3,616,500	988
MLCF	Maple Leaf Cement Factory Ltd. - Con...	27.70	-0.43	-1.53	3,313,500	875
BOP	Bank Of Punjab. - Banks Sector	11.56	-0.14	-1.20	3,068,000	675
BIPL	BankIslami Pakistan Ltd. - Banks Sector	8.53	0.09	1.07	2,999,500	391
SBL	Samba Bank Limited. - Banks Sector	6.05	0.55	10.00	2,961,000	694
FLYNG	Flying Cement Company Ltd. - Constr...	7.80	0.59	8.18	2,812,500	705
PIAA	Pakistan International Airline - Travel ...	8.80	-0.37	-4.03	2,636,000	746
BYCO	BYCO Petroleum Pak Ltd. - Oil and Ga...	9.89	-0.25	-2.47	2,565,000	776
LPCL	Lafarge Pakistan Cement Limited. - Co...	10.04	-0.27	-2.62	2,370,500	460
ENGRO	Engro Corporation Limited. - Chemical...	171.70	-4.64	-2.63	1,808,100	1,649
CHCC	Cherat Cement Co. Ltd. - Constructio...	81.75	-2.72	-3.22	1,533,500	881
TRG	TRG Pakistan Ltd. - Support Services ...	10.85	-0.30	-2.69	1,428,000	272
LOTCHM	Lotte Chemical Pakistan Ltd. - Sector	7.06	-0.09	-1.26	1,422,500	173
PACE	Pace (Pakistan) Ltd. - Real Estate Inv...	4.47	-0.09	-1.97	1,359,000	225
CLCPS	Chenab Limited Preference Shares. - ...	3.00	0.14	4.90	1,333,000	219
NML	Nishat Mills Ltd. - Personal Goods Sector	131.99	-3.90	-2.87	1,319,600	673
AICL	Adamjee Insurance Co. Ltd. - Non Lif...	38.67	-0.94	-2.37	1,317,200	818
SHNIR2	Shaheen Insurance Co Ltd.(R) - Sector	0.47	-0.30	-38.96	1,174,000	128
JBSL	JS Bank Limited. - Banks Sector	4.45	-0.25	-5.32	1,104,500	233
FABL	Faysal Bank Limited. - Banks Sector	12.38	-0.28	-2.21	1,089,500	249
NIB	NIB Bank Limited - Banks Sector	2.30	-0.04	-1.71	1,062,000	158

## Shortcuts

Shortcuts for Logs are shown in the following window,

The screenshot shows the TradeCast v3.0.8 interface. A 'Shortcuts' menu is open, listing 'Shortcut Keys F1', 'Disclaimer', 'Feedback', and 'About Trade Cast Ctrl+A'. The main window displays a 'Scrip Browse' table for PIAA with columns for Mkt, Scrip, BVol, Buy, Sell, SVol, LastPrice, Change, Trade, and Dir. The table lists various scrips like REG PIAA, REG MCB, REG PPL, etc. On the right, there are 'Market Depth By Order' and 'Market Depth By Price' windows for PIAA. The bottom status bar shows 'Standard Capital Securities (Pvt) Limited' and 'Final Margin Call for Account SCS0297'.


Information about all the shortcuts can be found by pressing “F1”.

Following window will appear having all the shortcut details,

Window	Shortcut keys
About Trade Cast	Ctrl + A
Account Statement	Alt + A
Activity Log	Ctrl + F7
Bunch Order	F6
Buy	F4
Cancel	F11
Cash Withdrawal Request	Alt + R
Cash Withdrawal Statement	Alt + W
Change Order	F10
Change Password	Alt + P
Change PIN	Alt + C
Daily Trade Report	Ctrl + F8
Detailed Quote	Ctrl + F4
Indices Summary	Ctrl + E
Exposure Watch	F2
Top 30 Movers	Ctrl + T
Watches	F12
Logout	Alt + F4
Market Depth By Order	Ctrl + F3
Market Depth By Price	Ctrl + F2
Message Window	Ctrl + F12
Outstanding Log	Ctrl + F5
Preferences	Ctrl + P
Restore Default Layout	Ctrl + R
Scrip Browse	F3
Sector Performance	Ctrl + S
Sell	F5
Shortcut Keys	F1
Short Sell	F8

## Cash Withdrawal Request ( Alt + R )


Cash Withdrawal Request
✕



**Cash Withdrawal Request**

Please select the account for which you wish to make Cash Withdrawal

Account No  PIN

 **Cash Withdrawal Statement** Forgot PIN?

Available Amount	Withdrawal Amount	Remaining Amount
PKR <input type="text"/>	- <input type="text"/>	= <input type="text"/>

**Cheque Delivery**  
Please select this option if you would like us to send cheque at your registered Address.

**Cheque Pickup**   
Please select this option if you would like to pickup cheque from our branches.

Please enter your comments (if required)